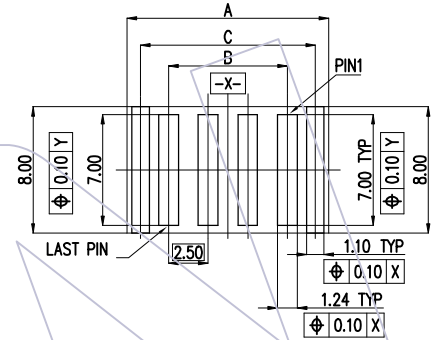
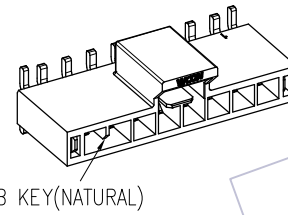
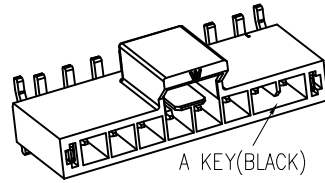
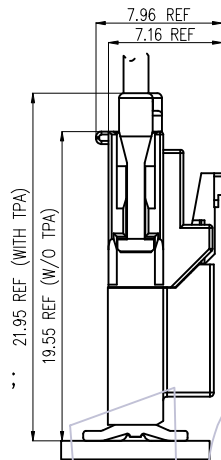
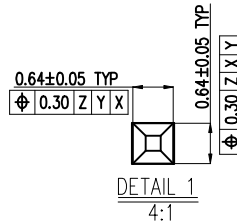
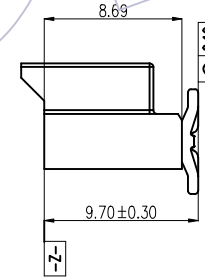
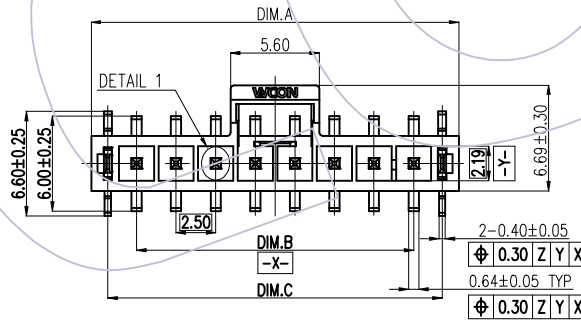
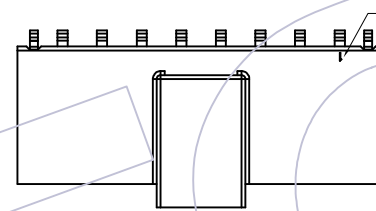


**NOTES:**

- Rated Current: See Table 1;
- Contact Resistance: Initial: 10mΩ Max.  
Final: 20mΩ Max;
- Withstand Voltage: 1500V AC;
- Insulation Resistance: 1000MΩ Min;
- Operation Temperature: -40°C to +125°C;
- Contact Material: copper alloy;
- Contact Plating:  
Under Plating Nickel 50-80u" ;  
Solder Area: Bright Tin 100-200u" Min;  
Contact Area: Au Or Sn
- Insulator Body Material: LCP+30%G.F UL94V-0 ;
- Recommended process:  
Wave Solder, Peak temperature: 260±5°C.
- RoHS COMPLIANT.



RECOMMENDED PCB LAYOUT  
(CONNECTOR SIDE VIEW)  
TOLERANCE ±0.05  
THICKNESS: 1.60MM



**Ordering Information**

WF 2058-1 WM H XX XX X X 1  
 Row 1=Single  
 180° SMT  
 High Temperature Plastic  
 NO. of PIN  
 02=2 Pin  
 .....  
 08=8 Pin

Package A=Tray  
 Housing Color  
 T=Natural  
 B=Black  
 Contact Plating  
 S1=3u" Gold/Tin  
 S4=15u" Gold/Tin  
 S5=30u" Gold/Tin  
 BLank=Bright Tin

Pin	尺寸		
	DIM.A	DIM.B	DIM.C
1*2	8.23	2.50	6.11
1*3	10.73	5.00	8.61
1*4	13.23	7.50	11.11
1*5	15.73	10.00	13.61
1*6	18.23	12.50	16.11
1*7	20.73	15.00	18.61
1*8	23.23	17.50	21.11

				OPERATION	DRAW	DATE	SCALE	Fit	PART NO.
				x. ±0.60	Dean.Liu	2023/05/11	UNIT	mm [inch]	WF2508-1WMHXXXXX1
				x.X ±0.40	CHECK	DATE	SIZE	A4	TITLE:
A0	2023/05/11	NEW		x.XX ±0.25	APPROVE	DATE	SHEET	1/2	2.5*2.5mm Wafer single row, car connector 180° SMT Socket
REV	DATE	MODIFICATION DESCRIPTION	CHANGE	Angle ± 3°			PROJ.	Customer NO.	



Http: www.wcon.com

WCON-Dongguan  
Tel: +86 769 85358920  
Fax: +86 769 85358915  
E-mail: sales@wcon.com

WCON-Kunshan  
Tel: +86 512 57468408  
Fax: +86 512 57468468  
E-mail: salesks@wcon.com