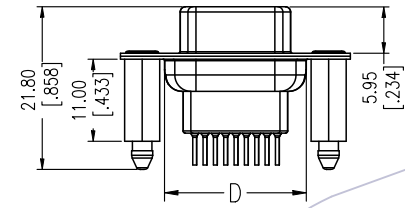
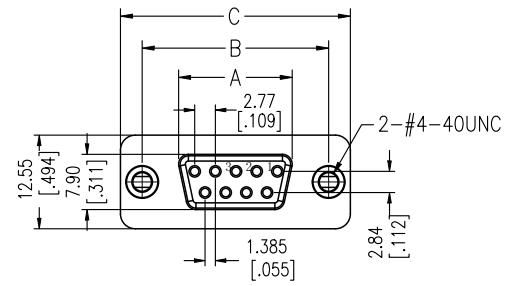


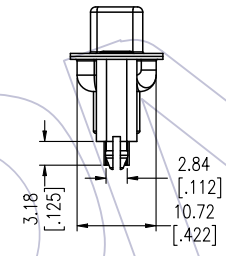
# HSF

NOTES:  
 Current Rating: 3.0AMP  
 Contact Resistance: 20mΩ Max  
 Withstand Voltage: 500V AC/DC  
 Insulation Resistance: 1000MΩ Min  
 Operation Temperature: -55°C to +105°C

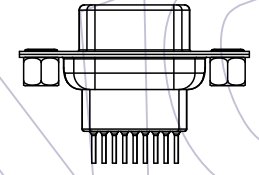
Contact Material: Brass  
 Contact plating: Au Or Sn over Ni  
 Insulator Material: PBT+30%G.F UL94V-0  
 Shell: Cold Roller Steel, Ni Plated  
 Nut: Brass, Sn Over Ni Plated



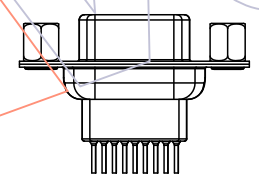
6222A-XXFYXXB01



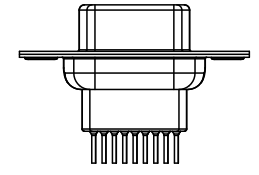
6222A-XXFBXXB01



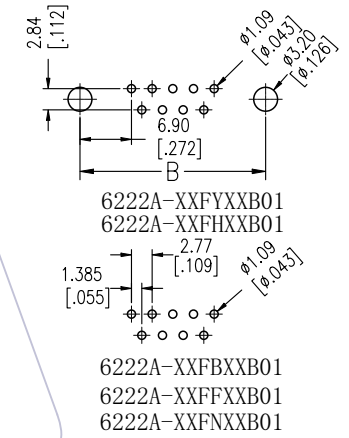
6222A-XXFFXXB01



6222A-XXFNXXB01



Recommended P.C.B Layout (Top Side)  
 (PCB BOARD TOLERANCE ±0.05)



6222A-XXFYXXB01  
 6222A-XXFHXXB01  
 6222A-XXFBXXB01  
 6222A-XXFFXXB01  
 6222A-XXFNXXB01

## Ordering Information

6222A-XX F X XX B 01

No. of Pins	Type	Contact Plating	Insulator Color
09,15,25,37P	Y=With Back Fork B=With Back Nut F=With Front Nut N=Without Fork Without Nut H=With Back Fork With Screw	S0=Gold Flash/Tin S3=10u"Gold/Tin S4=15u"Gold/Tin S5=30u"Gold/Tin SN=Tin	B:Black U:Blue

No. of Positions	DIM "A"	DIM "B"	DIM "C"	DIM "D"
09	16.33	24.99	30.81	19.28
15	24.66	33.32	39.14	27.65
25	38.38	47.04	53.04	41.30
37	54.84	63.50	69.32	57.44

REV	DATE	MODIFICATION DESCRIPTION	CHANGE	OPERATION	DRAW	DATE	SCALE	FIT	PART NO.
A0	2012/12/04	NEW	-----	x.x ±0.40	JYHuang	2012/12/04	UNIT mm		6222A-XXFXXXB01
				x.xx ±0.25	CHECK	DATE	SIZE A4		TITLE: D-SUB FEMALE DUAL ROW 180° DIP
				x.xxx ±0.15	APPROVE	DATE	SHEET 1/1		Customer NO.
				Angle ± 3°			PROJ.		
				DIM TOL					



Http: www.wcon.com  
 WCON-Dongguan Tel: +86 769 85358920  
 WCON-Kunshan Tel: +86 512 57468408  
 Fax: +86 769 85358915  
 Fax: +86 512 57468468  
 E-mail: sales@wcon.com  
 E-mail: salesks@wcon.com