

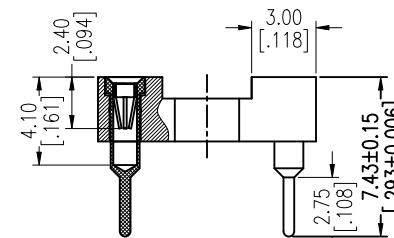
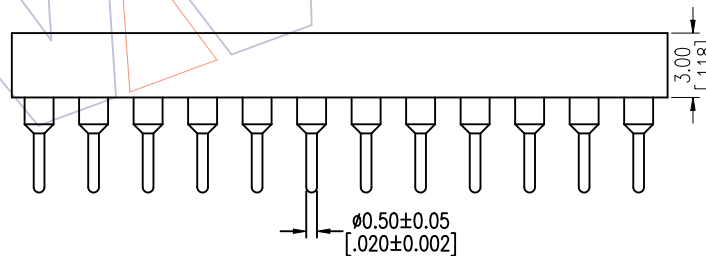
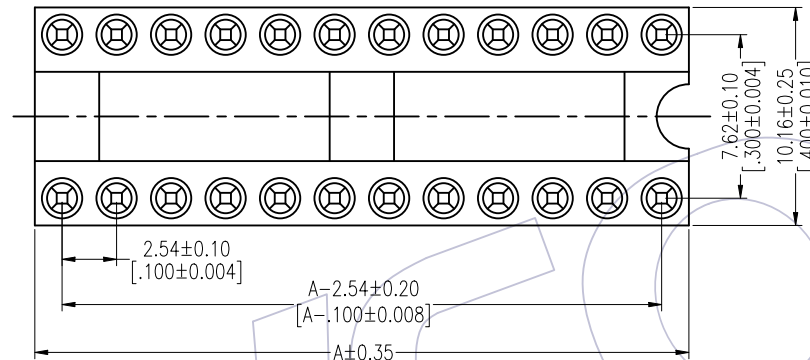
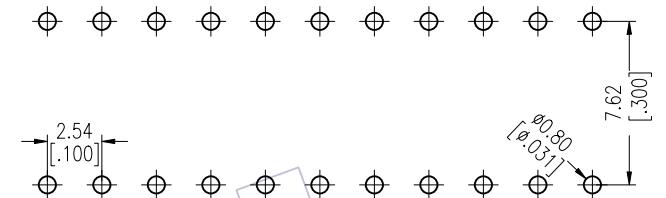
HSF

TECHNICAL SPECS:

Current Rating: 1.0AMP
 Contact Resistance: 10mΩ Max
 Dielectric Strength: Min 1000V_{RMS}
 Mechanical Life: Min 100 cycles
 Mating Pin: Ø0.40 to Ø0.56mm
 Forces: (polished steel gauge Ø0.43mm)
 Insertion: 200g Max/Pin, Withdrawal: 60g Min/Pin
 Operation Temperature: -40°C to +105°C

Sleeve: Brass CuZn36Pb3(C36000), Sn over Ni
 Contact Clip(4 finger): BeCu(C17200), Au or Sn over Ni
 Insulator Material: PPS+30%G.F(UL94V-0)
 06P~18P Insulators without center bar
 20P~28P Insulators with center one bar

Recommended P.C.B Layout(Top Side) (PCB BOARD TOLERANCE ±0.05)



Ordering Information

7110-301 XX S XX 074 X 1

Row of Pitch 1=7.62mm
 No. of Pin See tab
 Contact Plating S0=Gold Flash/Tin T=Tube S3=10u"Gold/Tin A=Tray S4=15u"Gold/Tin S5=30u"Gold/Tin SN=Tin

Dimensional & Ordering Information

NO. of Poles	Part No.	Dim
		A
06	7110-30106SXX074X1	7.62
08	7110-30108SXX074X1	10.16
10	7110-30110SXX074X1	12.70
14	7110-30114SXX074X1	17.78
16	7110-30116SXX074X1	20.32
18	7110-30118SXX074X1	22.86
20	7110-30120SXX074X1	25.40
22	7110-30122SXX074X1	27.94
24	7110-30124SXX074X1	30.48
28	7110-30128SXX074X1	35.56

OPERATION	DRAW	DATE	SCALE	FIT	PART NO.
X.X ±0.40	JYHuang	2012/11/02	UNIT	mm	SEE TAB
X.XX ±0.25	CHECK	DATE	SIZE	A4	TITLE:
X.XXX ±0.15	APPROVE	DATE	SHEET	1/1	2.54mm IC SOCKET 180° H=3.0 L=7.43
Angle ± 3'			PROJ.		Row of Pitch 7.62
DIM TOL					Customer NO.

WCON

Http: www.wcon.com

WCON-Dongguan Tel: +86 769 85358920 Fax: +86 769 85358915 E-mail: sales@wcon.com
 WCON-Kunshan Tel: +86 512 57468408 Fax: +86 512 57468468 E-mail: salesks@wcon.com