

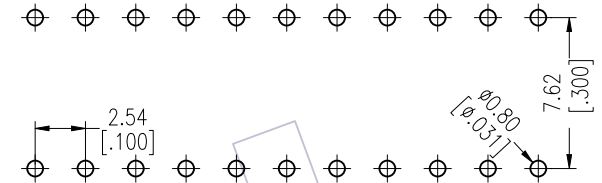
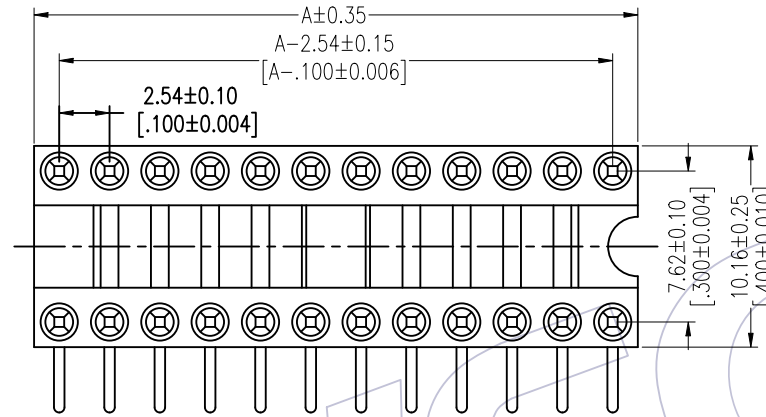
HSF

TECHNICAL SPECS:

Current Rating:1.0AMP
 Contact Resistance:10mΩ Max
 Dielectric Strength: Min 1000V_{RMS}
 Mechanical Life: Min 100 cycles
 Mating Pin:φ0.40 to φ0.56mm
 Forces: (polished steel gauge φ0.43mm)
 Insertion:200g Max/Pin,Withdrawal:60g Min/Pin
 Operation Temperature:-40°C to +105°C

Sleeve:Brass CuZn36Pb3(C36000),Sn over Ni
 Contact Clip(4 finger):BeCu(C17200),Au or Sn over Ni
 Insulator Material:PPS+30%G.F(UL94V-0)
 06P~18P Insulators without center bar
 20P~28P Insulators with center one bar

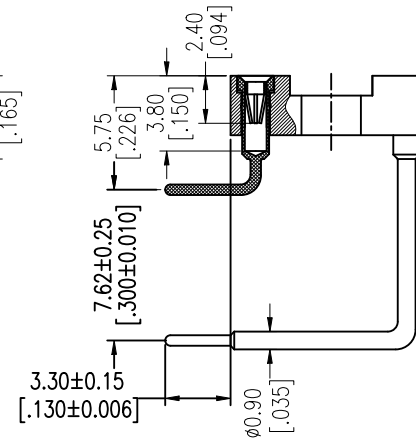
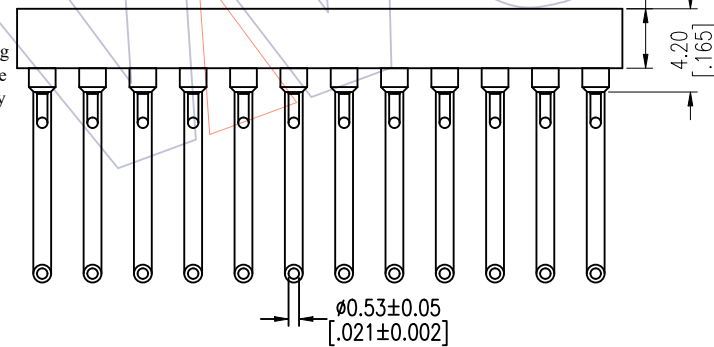
Recommended P.C.B Layout(Top Side)
 (PCB BOARD TOLERANCE±0.05)



Ordering Information

7110-301 XX R XX 097 X 1

Row of Pitch 1=7.62mm
 No. of Pin See tab
 Contact Plating S0=Gold Flash/Tin, S3=10u"Gold/Tin, S4=15u"Gold/Tin, SN=Tin, S5=30u"Gold/Tin
 Pin Long 097=9.7mm
 Packing T=Tube, A=Tray



Dimensional & Ordering Information

NO.of Poles	Part No.	Dim
		A
06	7110-30106RXX097X1	7.62
08	7110-30108RXX097X1	10.16
10	7110-30110RXX097X1	12.70
12	7110-30112RXX097X1	15.24
14	7110-30114RXX097X1	17.78
16	7110-30116RXX097X1	20.32
18	7110-30118RXX097X1	22.86
20	7110-30120RXX097X1	25.40
22	7110-30122RXX097X1	27.94
24	7110-30124RXX097X1	30.48
28	7110-30128RXX097X1	35.56

				OPERATION	DRAW	DATE	SCALE	FIT	PART NO.
				x.x ±0.40	JYHuang	2012/11/02	UNIT	mm	7110-301XXRXX097X1
				x.xx ±0.25	CHECK	DATE	SIZE	A4	TITLE:
A0	2012/11/02		NEW	x.xxx ±0.15	APPROVE	DATE	SHEET	1/1	2.54mm IC SOCKET 90° H=3.0
REV	DATE		MODIFICATION DESCRIPTION	Angle ± 3°			PROJ.	Customer NO.	
			CHANGE	DIM	TOL				

WCON

Http: www.wcon.com

WCON-Dongguan Tel: +86 769 85358920 Fax: +86 769 85358915 E-mail: sales@wcon.com
 WCON-Kunshan Tel: +86 512 57468408 Fax: +86 512 57468468 E-mail: salesks@wcon.com