

HFS

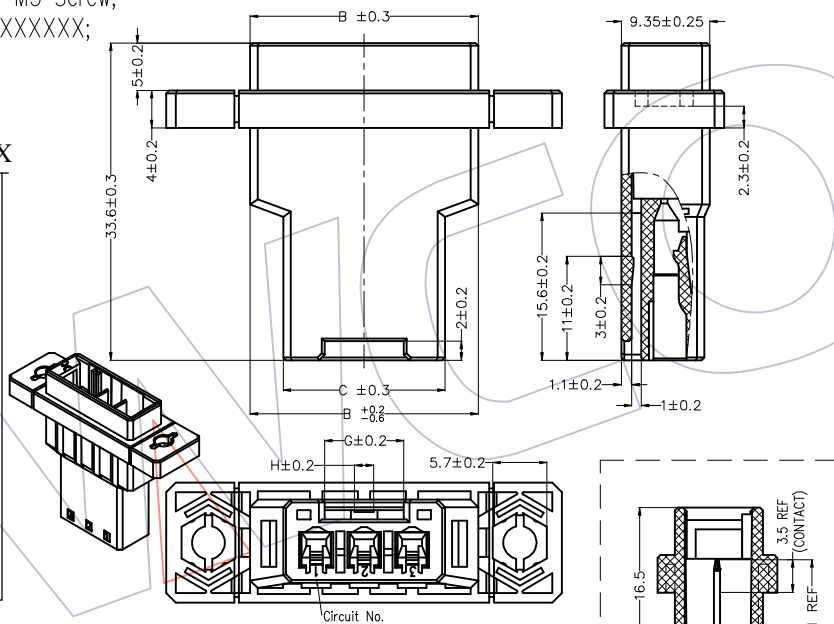
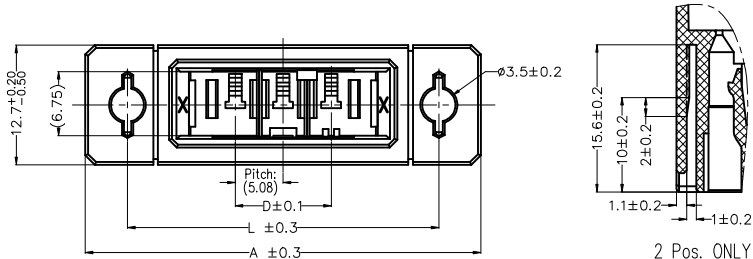
NOTES:

- 1.Voltage Rating: 600V AC ;
- 2.Withstand Voltage: 2200V AC;
- 3.Insulation Resistance: 1000MΩ Min;
- 4.Operating Temperature: -40°C to +125°C;
- 5.Insulator Material: PBT,G.F,UL94V-0,BK;
- 6.Panel Attachment Recommendation M3 Screw;
- 7.Mating Terminal: WD3810-MTD4XXXXXX;

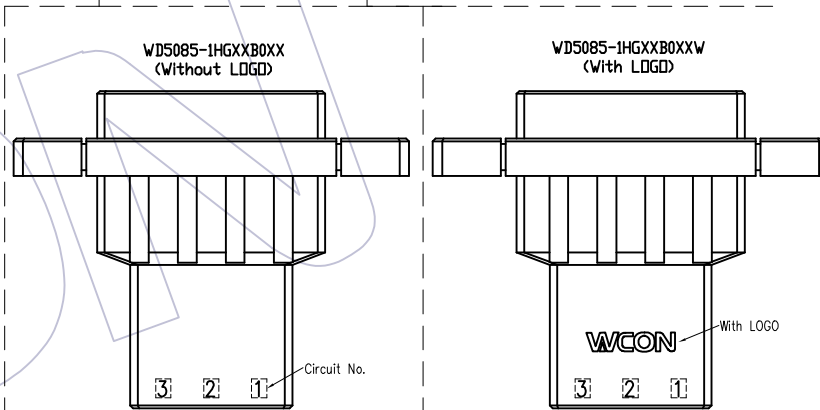
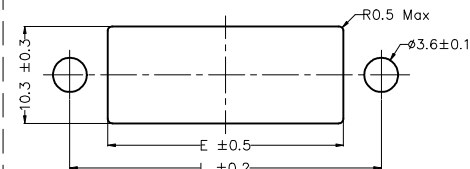
Ordering Information

WD5085 - 1 HG XX B 0 XX X

- Single Row
- Panel Type
- No.of Pins:
02=2PIN
03=3PIN
04=4PIN
- Housing Color:
B=Black
- Packing:
0=PE Bag
- Keying Type:
01=X;
02=Y;
- W="Wcon" logo
Blank=Without logo

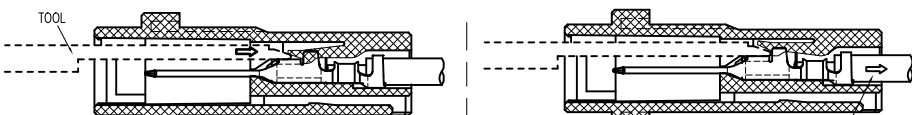


RECOMMENDED PANEL LAYOUT



Pos.	Part Number	KEYING	KEY LOCATION (SCALE 1:2)	A	B	C	D	G	H	L	E
2	WD5085-1HG02B001X	X		36.83	19.08	12.08	5.08	8.4	8.4	28.0	20.0
	WD5085-1HG02B002X	Y		36.83	19.08	12.08	5.08	8.4	8.4	28.0	20.0
3	WD5085-1HG03B001X	X		41.91	24.16	17.16	10.16	8.4	2.0	33.0	25.0
	WD5085-1HG03B002X	Y		41.91	24.16	17.16	10.16	8.4	2.0	33.0	25.0
4	WD5085-1HG04B001X	X		46.99	29.24	22.24	15.24	8.4	2.0	38.0	30.0
	WD5085-1HG04B002X	Y		46.99	29.24	22.24	15.24	8.4	2.0	38.0	30.0

Wiring type tool for pulling the contact from the housing



1.The tip of the tool lifts the housing lance and frees the contact.

2.Contact can be withdrawn.

WD3810-MTD4XXXXXX

OPERATION

X.X ±0.30

X.XX ±0.25

X.XXX ±0.2

Angle ± 3°

DIM TOL

DRAW

Houfu Peng

CHECK

Houfu Peng

APPROVE

Houfu Peng

DATE

2022.09.23

DATE

DATE

SCALE

UNIT

mm

SIZE

A4

SHEET

1/1

PROJ.

FIT

PART NO.

WD5085-1HGXXB0XXX

TITLE:

5.08mm Dyn. TYPE Housing

(Panel Type) Single Row

Customer NO.

WCON

Http: www.wcon.com

WCON-Dongguan

Tel: +86 769 85358920

Fax: +86 769 85358915

E-mail: sales@wcon.com

WCON-Kunshan

Tel: +86 512 57468408

Fax: +86 512 57468468

E-mail: salesks@wcon.com

A0 2022.09.23

NEW

Houfu Peng

REV DATE

MODIFICATION DESCRIPTION

CHANGE