

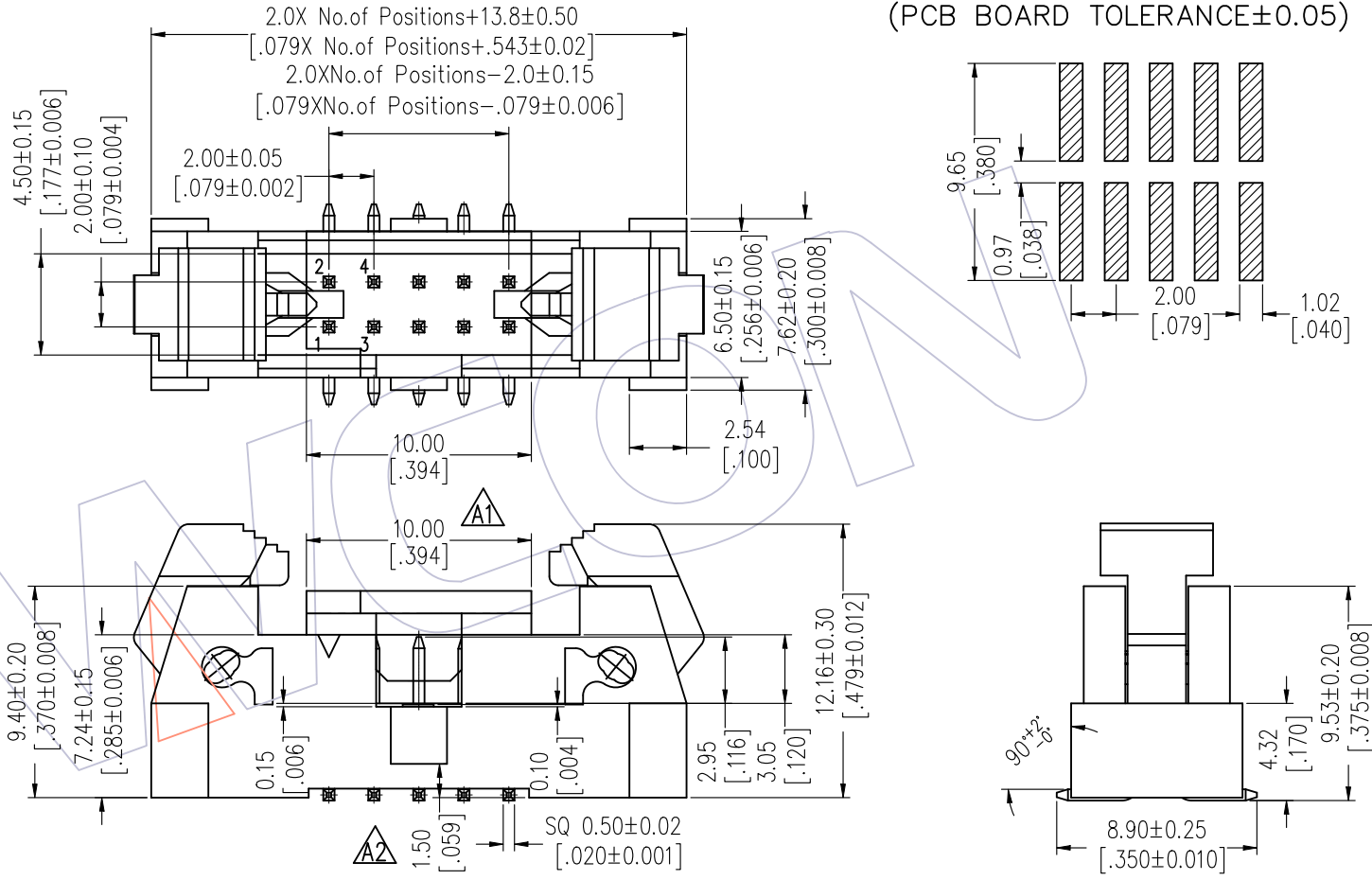
HSF

NOTES:

Current Rating: 2.0AMP
 Contact Resistance: 20mΩ Max
 Withstand Voltage: 500V AC/DC
 Insulation Resistance: 1000MΩ Min
 Operation Temperature: -40℃ to +105℃

Contact Material: Brass
 Contact plating: Au Or Sn over Ni
 Insulator Material: LCP+30%G.F UL94V-0

Recommended P.C.B Layout(Top Side)
 (PCB BOARD TOLERANCE±0.05)



Ordering Information

3221-XX M XX B S X 1

No. of Pins	Contact Plating	Insulator Color	Packing
06 30	G0=Gold Flash	B=Black	T=Tube A1
08 34	G3=10u"Gold		R=Reel+Cap
10 40	G4=15u"Gold		
14 44	G5=30u"Gold		
16 50	S0=Gold Flash/Tin		
20 60	S3=10u"Gold/Tin		
24 64	S4=15u"Gold/Tin		
26	S5=30u"Gold/Tin		
	SN=Tin		

Item	Pitch	Mating
Standard	2.00	5225
Alternate		

PIN(PerRow)	6-20P	24-40P	44-64P
	M	0.10	0.15

A3	2023/02/17	Add Flatness	Du Ying	OPERATION	DRAW	DATE	SCALE	FIT	PART NO.
A2	2020/05/14	Modify Bump Add 1.50mm A2	Du Ying	x.xx ±0.40	Du Ying	2023/02/17	UNIT	mm	3221-XXMXXBSX1
A1	2020/01/07	ADD Reel Packing A1	XSR	x.xx ±0.25	CHECK	DATE	SIZE	A4	TITLE:
A0	2012/10/06	NEW	-----	x.xxx ±0.15	APPROVE	DATE	SHEET	1/1	2.0mm Ejector Header "S" Type SMT
REV	DATE	MODIFICATION DESCRIPTION	CHANGE	Angle ± 3°	APPROVE	DATE	PROJ.		Customer NO.
				DIM TOL					

WCON

Http: www.wcon.com

WCON-Dongguan	WCON-Kunshan
Tel: +86 769 85358920	Tel: +86 512 57468408
Fax: +86 769 85358915	Fax: +86 512 57468468
E-mail: sales@wcon.com	E-mail: salesks@wcon.com