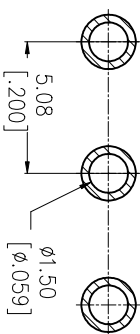
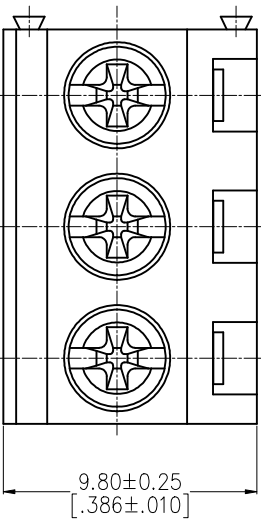


HSF

NOTES:

Rated Current: 18 AMP
 Rated Voltage: 300 V
 Contact Resistance: 8 mΩ max
 Withstand Voltage: 2500 V AC/DC
 Insulation Resistance: 1000 MΩ min
 Operation Temperature: -40°C to +105°C
 Screw Torque: 4.5 lbf·in
 Wire Range: 12~30 AWG
 Screw Material: Steel
 Pin Block Material: Brass
 Cite Feet Plating: Matte Tin Plated Over Nickel
 Insulator Material: PA66 UL94 V-0

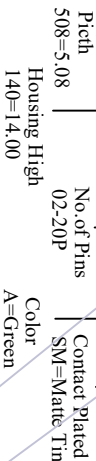
DIM.B	DIM.A	PINS
20.32±0.25	15.24±0.20	4P=2P+2P
25.40±0.25	20.32±0.20	5P=2P+3P
30.48±0.30	25.40±0.25	6P=3P+3P
35.56±0.30	30.48±0.25	7P=2P+2P+3P
40.64±0.30	35.56±0.25	8P=3P+3P+2P
45.72±0.35	40.64±0.30	9P=3P+3P+3P
50.80±0.35	45.72±0.30	10P=3P+3P+2P+2P
55.88±0.35	50.80±0.30	11P=3P+3P+3P+2P
60.96±0.40	55.88±0.35	12P=3P+3P+3P+3P
66.04±0.40	60.96±0.35	13P=3P+3P+3P+2P+2P
71.12±0.40	66.04±0.35	14P=3P+3P+3P+3P+2P
76.20±0.45	71.12±0.40	15P=3P+3P+3P+3P+3P
81.28±0.45	76.20±0.40	16P=3P+3P+3P+3P+2P+2P
86.36±0.45	81.28±0.40	17P=3P+3P+3P+3P+2P
91.44±0.50	86.36±0.45	18P=3P+3P+3P+3P+3P+3P
96.52±0.50	91.44±0.45	19P=3P+3P+3P+3P+2P+2P
101.6±0.50	96.52±0.45	20P=3P+3P+3P+3P+3P+2P



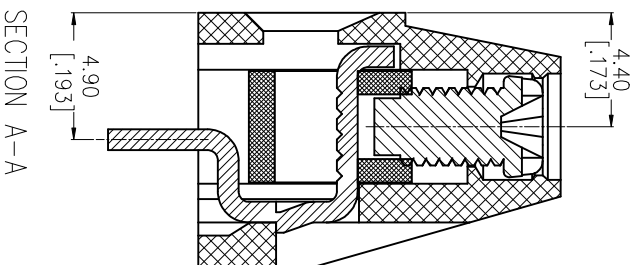
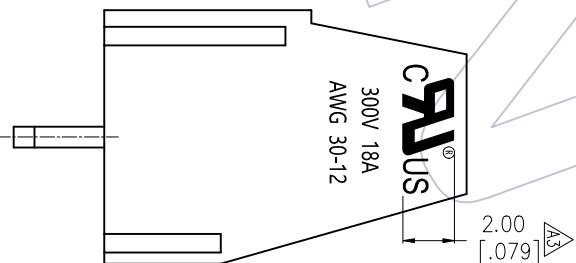
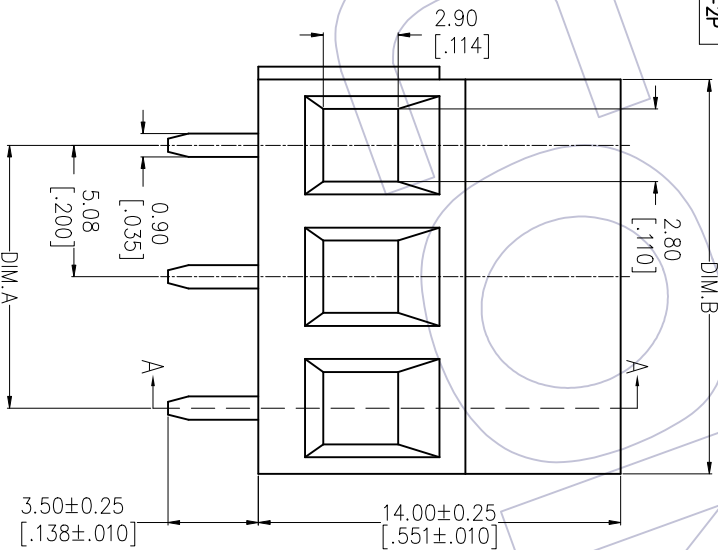
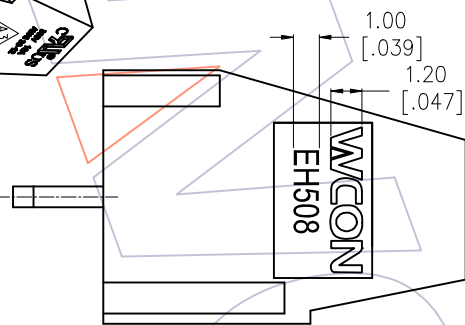
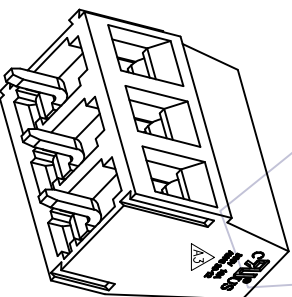
Recommended P.C.B Layout (Top Side)
 (PCB BOARD TOLERANCE ±0.05)

Ordering Information:

E H 508 - 140 S XX A SM 1



3P	10.16±0.15	15.24±0.20
2P	5.08±0.15	10.16±0.20
PIN	DIM.A	DIM.B



A4	2021/11/01	Add 4-20P	ASR	OPERATION	DRAW	DATE	SCALE	FIT	PART NO.	WCON Http: www.wcon.com WCON-Dongguan Tel: +86 769 85358920 Fax: +86 512 57468408 WCON-Kunshan Tel: +86 512 57468408 Fax: +86 512 57468468
A3	2020/06/18	Add UL Logo	ASR	±0.40	ASR	2021/11/01	mm	A4	EH508-140SXXASM1	
A2	2013/07/08	Modify		±0.25	CHECK	DATE	inch	A4	5.08mm Pitch Euro Terminal Blocks	
A0	2013/02/04	NEW		±0.15	APPROVE	DATE	SHEET	1/1	Customer NO.	
REV	DATE	MODIFICATION DESCRIPTION	CHANGE	Angle ± 3°	TOL		PROJ.			