

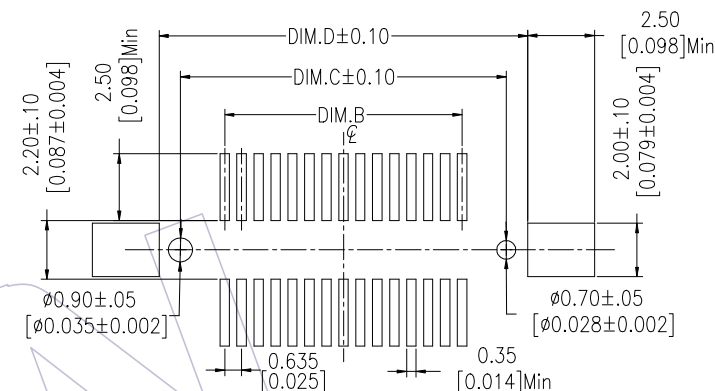
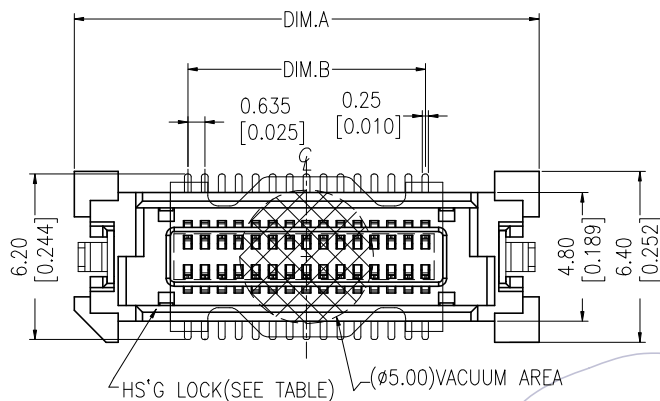
# HSF

**NOTES:**

1. Electrical Performance:
  - 1-1. Current Rating: 0.5 A at AC 100V.
  - 1-2. Withstand Voltage: 250V AC.
  - 1-3. Contact Resistance: See Table.
  - 1-4. Insulation Resistance: 1000MΩ Min.
  - 1-5. Operation Temperature: -55°C to +85°C
2. Material:
  - 2-1. Housing: LCP; Black/Natural; UL94V-0.
  - 2-2. Contact: Phosphor Bronze, T=0.20mm.
  - 2-3. Fitting Nail: Brass, T=0.25mm.
  - 2-4. Metal Cap: Stainless Steel, T=0.20mm.
3. Finish:
  - 3-1. Contact: Gold Plating On Contact Area; Matte Tin Plating On Solder Tails Over Ni.
  - 3-2. Fitting Nail: Sn Plating Over, Ni Under Plating

Flatness: <80 Pins The "M" is 0.12mm MAX  
 ≥80 Pins The "M" is 0.15mm MAX

**Recommended P.C.B Layout (Top Side)**  
 (PCB BOARD TOLERANCE ±0.05)

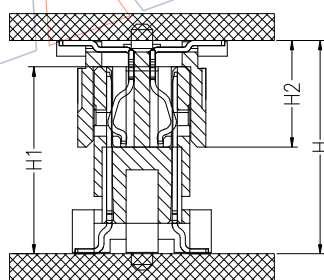
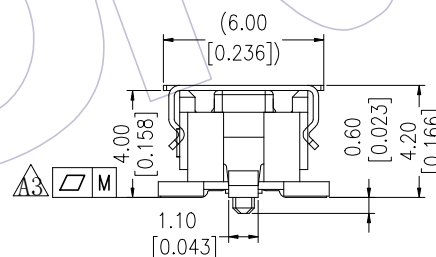
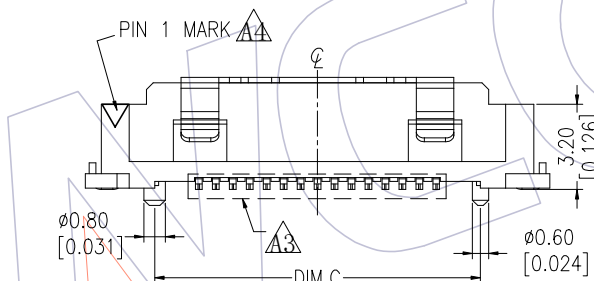


## Ordering Information

3660-S XXX - 040 XX R 01

No. of Pins    Housing High    Contact Plating    R=Tape&Reel+CAP

G1=3u"Gold  
 G2=5u"Gold  
 G3=10u"Gold/Tin  
 S1=3u"Gold/Tin  
 S2=5u"Gold/Tin  
 S3=10u"Gold/Tin



Assembly

ASS'Y HIGH(H)	PLUG(H1)	SOCKET(H2)
6.00	5.00	4.00
7.00	6.00	
8.00	7.00	
9.00	8.00	
10.00	9.00	

ASS'Y HIGH(H)	Before Test	After Test
6.0~7.0	≤40mΩ	≤60mΩ
8.0~10.0	≤50mΩ	≤70mΩ

NO	55.07	53.47	50.165	58.67	160
		48.72	47.12	43.815	52.32
YES	42.30	40.77	37.465	45.97	120
	36.02	34.42	31.115	39.62	100
	32.85	31.25	27.940	36.45	90
	29.67	28.07	24.765	33.27	80
	26.50	24.90	21.590	30.10	70
	23.32	21.72	18.415	26.92	60
	20.15	18.55	15.240	23.75	50
	16.97	15.37	12.065	20.57	40
	13.80	12.20	8.890	17.40	30
	10.62	9.02	5.715	14.22	20
HS'G LOCK	DIM.D	DIM.C	DIM.B	DIM.A	PIN NO.

A5	2017/07/19	Modify	△5		Ding	2017/07/19			3660-SXXX-040XXR01
A4	2014/05/07	Modify	△4						△1 0.635mm BTB "M" FEMALE SMT TYPE
A3	2014/03/24	Modify The Contact Resistance	△3						
A0	2012/11/14	NEW	—						

# WCON

Http: www.wcon.com

WCON-Dongguan    WCON-Kunshan  
 Tel: +86 769 85358920    Tel: +86 512 57468408  
 Fax: +86 769 85358915    Fax: +86 512 57468468  
 E-mail: sales@wcon.com    E-mail: salesks@wcon.com