

# HSF

RECOMMENDED PCB LAYOUT  
TOLERANCE IS ±0.05

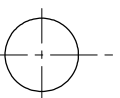
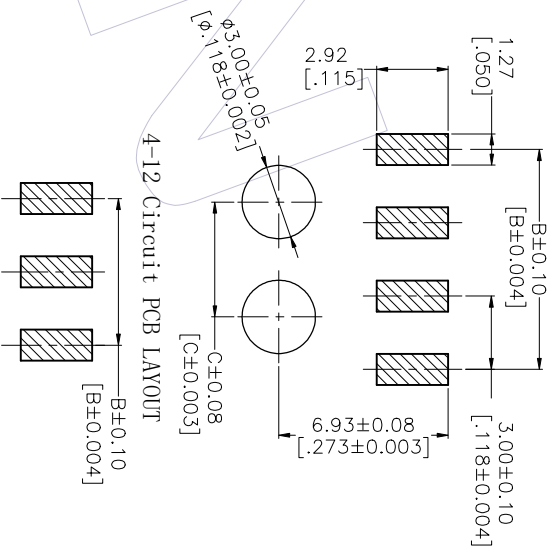
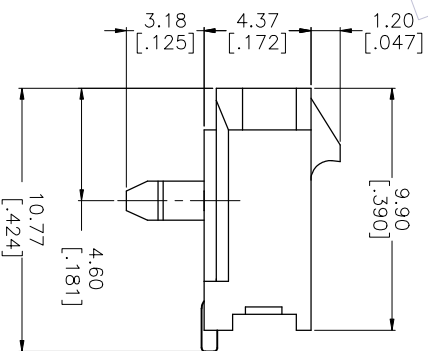
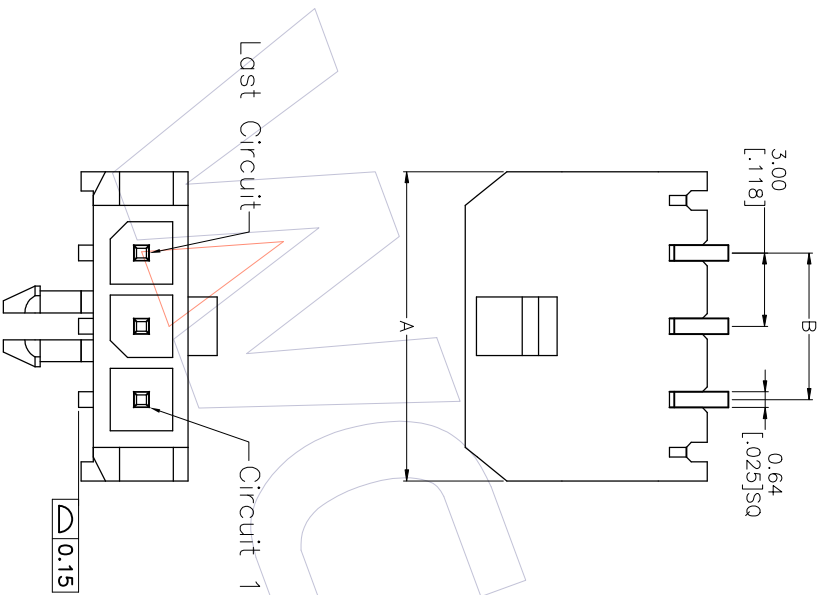
**NOTES:**

Current Rating: 5.0A AMP  
 Contact Resistance: 10milliohm Max  
 Withstand Voltage: 1000V AC/Minute  
 Insulation Resistance: 1000Megohm Min  
 Operation Temperature: -25°C to +85°C  
 Housing Material: LCP+30%GF (UL94V-0)  
 Contact Material: Copper alloy  
 Contact plating: Au/Sn over Ni Plating

## Ordering Information

WF3001-1 WZ XX BX 1

Terminal shape: WZ:Water 90°SMT  
 NO. of Pins: 02-12Pin  
 Packing: 0=PE Bag, T=Tube, A=Tray, R=Tape&Reel



2-3 Circuit PCB LAYOUT

Circuit	A	B	C
02	9.65 [0.380]	3.00 [0.118]	NA
03	12.65 [0.498]	6.00 [0.236]	NA
04	15.65 [0.616]	9.00 [0.355]	4.70 [0.185]
05	18.65 [0.735]	12.00 [0.473]	7.70 [0.303]
06	21.65 [0.853]	15.00 [0.591]	10.70 [0.421]
07	24.65 [0.971]	18.00 [0.709]	13.70 [0.539]
08	27.65 [1.089]	21.00 [0.827]	16.70 [0.657]
09	30.65 [1.207]	24.00 [0.945]	19.70 [0.776]
10	33.65 [1.325]	27.00 [1.063]	22.70 [0.894]
11	36.65 [1.443]	30.00 [1.181]	25.70 [1.012]
12	39.65 [1.561]	33.00 [1.299]	28.70 [1.130]

# WCON

Http: www.wcon.com

WCON - Dongguan Tel: +86 769 8538920 Fax: +86 769 8535915 E-mail: sales@wcon.com  
 WCON - Kunshan Tel: +86 512 57468408 Fax: +86 512 57468468 E-mail: sales@wcon.com

REV	DATE	MODIFICATION DESCRIPTION	CHANGE
A1	2012.05.03	料号由WF3001-1WZXXXBX1变更为WF3001-1WZXXBX1	Atomty
A0	2011.12.20	NEW	

OPERATION	DRAW	DATE	SCALE	PART NO.
X.X	FZY	2012.05.02	1:1	WF3001-1WZXXXBX1
X.XX	CHECK	DATE	UNIT	TITLE:
X.XXX	APPROVE	DATE	mm	3.0 Water Single Row
Angle			inch	90°SMT With Post
DIM			A4	Customer NO.
TOL			1/1	
			PROJ.	