

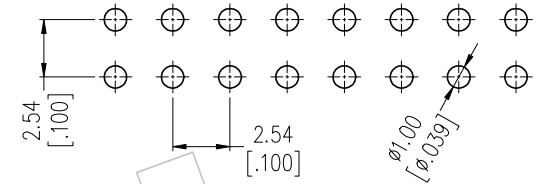
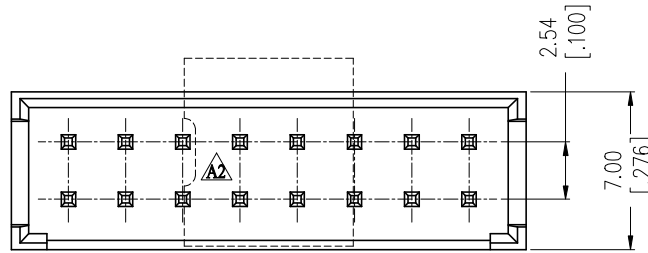
# HSF

**NOTES:**

Current Rating: 3.0A AMP  
 Contact Resistance: 20milliohm Max  
 Withstand Voltage: 1000V AC/Minute  
 Insulation Resistance: 1000Megohm Min  
 Operation Temperature: -40℃ to +105℃

Housing Material: PA9T+33%GF Black(UL94V-0)  
 Contact Material: Brass  
 Contact plating: Au or Sn over Ni Plating

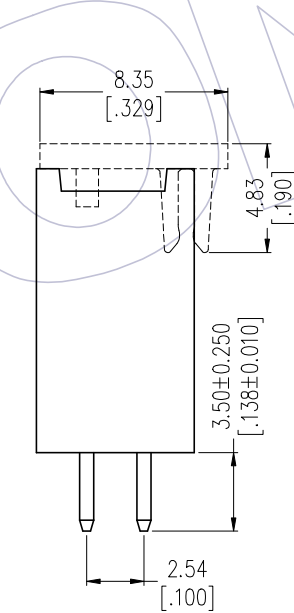
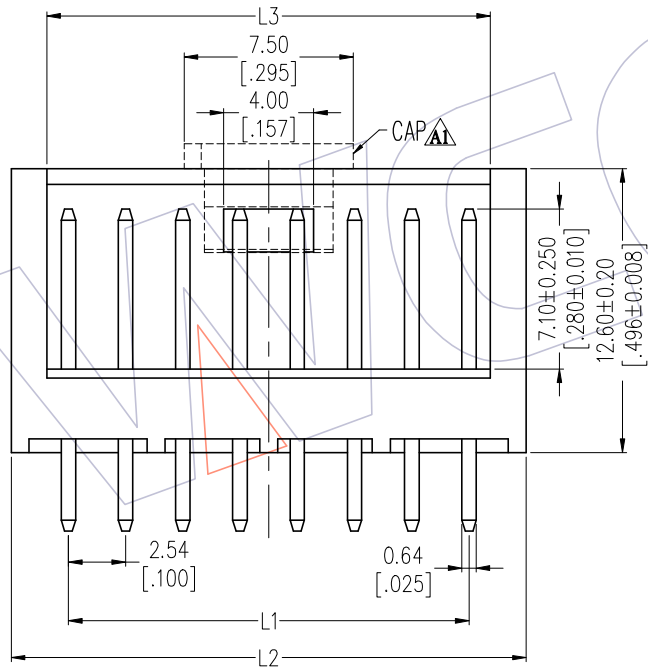
Recommended P.C.B Layout(Top Side)  
 (PCB BOARD TOLERANCE±0.05)



## Ordering Information

WF2548 -2 WS XX X X 1

- |                   |         |            |
|-------------------|---------|------------|
| Contact Plating   | Color   | Packing:   |
| S0=Gold Flash/Tin | B:Black | 0=PE Bag   |
| S3=10u"Gold/Tin   |         | T=Tube     |
| S4=15u"Gold/Tin   |         | P=Tube+CAP |
| S5=30u"Gold/Tin   |         | R=Reel+CAP |
| G0=Gold Flash     |         |            |
| G3=10u"Gold       |         |            |
| G4=15u"Gold       |         |            |
| G5=30u"Gold       |         |            |
| Blank=Tin         |         |            |



2-12P	L1	2.54xNo. of Positions-2.54±0.20 [0.100xNo. of Positions-0.100±0.008]
	L2	2.54xNo. of Positions+2.54±0.25 [0.100xNo. of Positions+0.100±0.010]
	L3	2.54xNo. of Positions-0.64±0.25 [0.100xNo. of Positions-0.025±0.010]
13-22P	L1	2.54xNo. of Positions-2.54±0.25 [0.100xNo. of Positions-0.100±0.010]
	L2	2.54xNo. of Positions+2.54±0.30 [0.100xNo. of Positions+0.100±0.012]
	L3	2.54xNo. of Positions-0.64±0.30 [0.100xNo. of Positions-0.025±0.012]

REV	DATE	MODIFICATION DESCRIPTION	CHANGE	OPERATION	DRAW	DATE	SCALE	FIT	PART NO.
A2	2022/04/22	Modify the CAP	—	X.X ±0.40	Ding	2022/04/22	UNIT	mm	WF2548-2WSXXBX1
A1	2018/08/03	Add the CAP	—	X.XX ±0.25	CHECK	DATE	SIZE	A4	
A0	2013/08/07	NEW	—	X.XXX ±0.15	APPROVE	DATE	SHEET	1/1	Customer NO.
				Angle ± 3°			PROJ.		
				DIM TOL					

# WCON

Http: www.wcon.com

WCON-Dongguan	WCON-Kunshan
Tel: +86 769 85358920	Tel: +86 512 57468408
Fax: +86 769 85358915	Fax: +86 512 57468468
E-mail: sales@wcon.com	E-mail: salesks@wcon.com