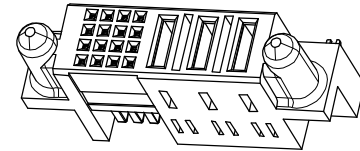
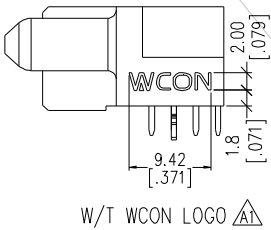
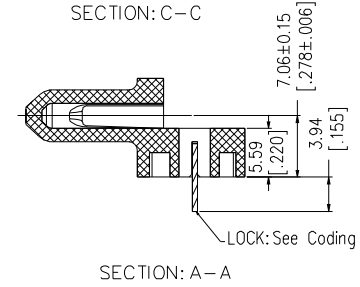
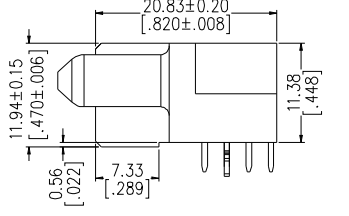
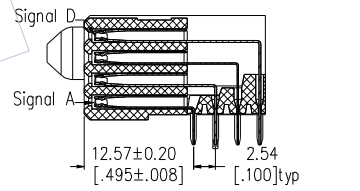
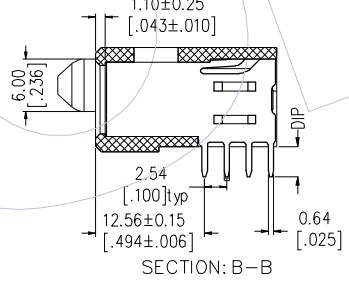
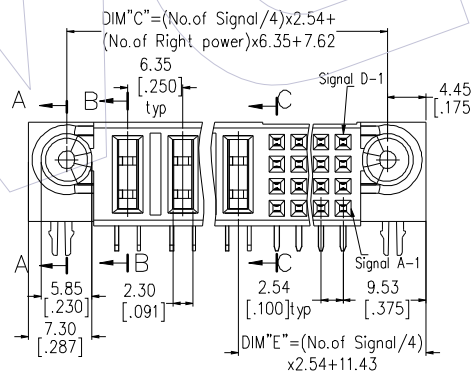
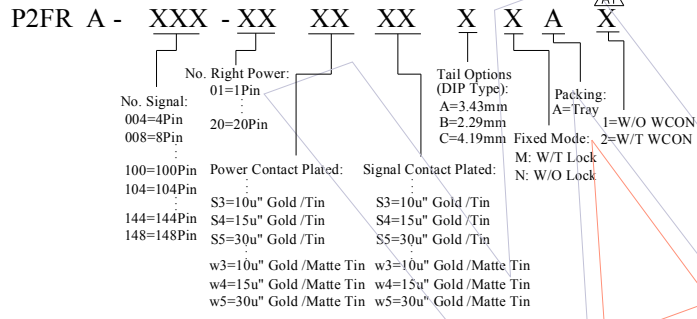
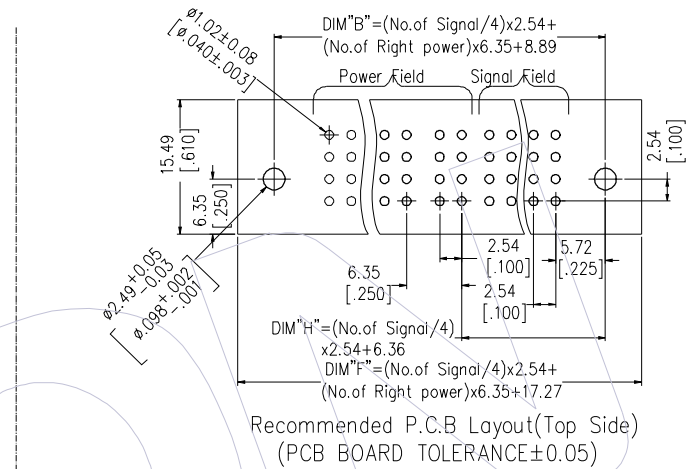
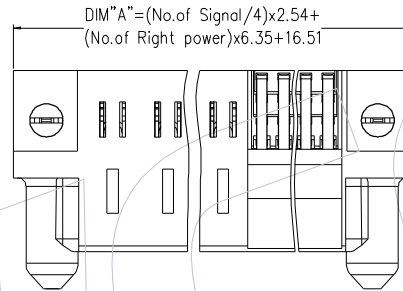
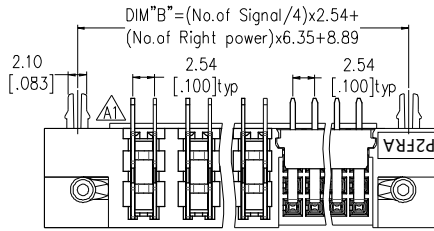

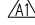
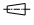


HSF

NOTES:

- Insulator material: PA9T+33%G.F, UL94 V-0;
- Terminal material: Copper Alloy;
Terminal Plating: Au/Sn Plated Over Nickel ;
- Rated Voltage: Signal 50V; Power 600V
- Rated Current: Power 30A; Signal 2.5A;
- Contact Resistance:
Power 0.7mΩ Max; Signal 20mΩ Max;
- Insulation Resistance: DC 500V
Power 10000MΩ Min; Signal 500MΩ Min;
- Insulation Withstand Voltage:
Power 2500VAC/1min; Signal 1000V AC/1min ;
- Durability :200 cycling;
- Operation Temperature: -20°C to +105°C;



				OPERATION	DRAW	DATE	SCALE	FIT	PART NO.	 Http: www.wcon.com
				x.x ±0.40	XSR	2021/07/27	UNIT	mm	P2FRA-XXX-XXXXXXXXAX 	
A1	2021/07/27	Add W/T WCON Spec.&P/N; Correct Drawing	XSR	x.xx ±0.25	CHECK	DATE	SIZE	A4	TITLE:	WCON-Dongguan Tel: +86 769 85358920 Fax: +86 769 85358915 E-mail: sales@wcon.com
A0	2018/10/10	NEW		x.xxx ±0.15	APPROVE	DATE	SHEET	1/2	PSP Spacing A 90° DIP FEMALE (TYPE-2: 2.54Signal+Right Power)	
REV	DATE	MODIFICATION DESCRIPTION	CHANGE	Angle ± 3° DIM TOL			PROJ.		Customer NO.	

Product Data Sheet

No.	P/N	No. Signal	No. Right Power	DIM "A"	DIM "B"	DIM "C"	DIM "E"	DIM "F"	DIM "H"
1	P2FRA-136-02XXXXXXXXAX	136	2	115.57	107.95	106.68	97.79	116.33	92.71
2	P2FRA-072-05XXXXXXXXAX	72	5	93.98	86.36	85.09	57.15	94.74	52.07
3	P2FRA-064-02XXXXXXXXAX	64	2	69.85	62.23	60.96	52.07	70.61	46.99
4	P2FRA-048-18XXXXXXXXAX	48	18	161.29	153.67	152.40	41.91	162.05	36.83
5	P2FRA-048-12XXXXXXXXAX	48	12	123.19	115.57	114.30	41.91	123.95	36.83
6	P2FRA-040-07XXXXXXXXAX	40	7	86.36	78.74	77.47	36.83	87.12	31.75
7	P2FRA-036-05XXXXXXXXAX	36	5	71.12	63.50	62.23	34.29	71.88	29.21
8	P2FRA-036-03XXXXXXXXAX	36	3	58.42	50.80	49.53	34.29	59.18	29.21
9	P2FRA-032-18XXXXXXXXAX	32	18	151.13	143.51	142.24	31.75	151.89	26.67
10	P2FRA-032-14XXXXXXXXAX	32	14	125.73	118.11	116.84	31.75	126.49	26.67
11	P2FRA-032-12XXXXXXXXAX	32	12	113.03	105.41	104.14	31.75	113.79	26.67
12	P2FRA-032-11XXXXXXXXAX	32	11	106.68	99.06	97.79	31.75	107.44	26.67
13	P2FRA-032-06XXXXXXXXAX	32	6	74.93	67.31	66.04	31.75	75.69	26.67
14	P2FRA-032-04XXXXXXXXAX	32	4	62.23	54.61	53.34	31.75	62.99	26.67
15	P2FRA-028-12XXXXXXXXAX	28	12	110.49	102.87	101.60	29.21	111.25	24.13
16	P2FRA-028-08XXXXXXXXAX	28	8	85.09	77.47	76.20	29.21	85.85	24.13
17	P2FRA-028-06XXXXXXXXAX	28	6	72.39	64.77	63.50	29.21	73.15	24.13
18	P2FRA-028-04XXXXXXXXAX	28	4	59.69	52.07	50.80	29.21	60.45	24.13
19	P2FRA-028-02XXXXXXXXAX	28	2	46.99	39.37	38.10	29.21	47.75	24.13
20	P2FRA-024-20XXXXXXXXAX	24	20	158.75	151.13	149.86	26.67	159.51	21.59
21	P2FRA-024-16XXXXXXXXAX	24	16	133.35	125.73	124.46	26.67	134.11	21.59
22	P2FRA-024-12XXXXXXXXAX	24	12	107.95	100.33	99.06	26.67	108.71	21.59
23	P2FRA-024-10XXXXXXXXAX	24	10	95.25	87.63	86.36	26.67	96.01	21.59
24	P2FRA-024-08XXXXXXXXAX	24	8	82.55	74.93	73.66	26.67	83.31	21.59
25	P2FRA-024-07XXXXXXXXAX	24	7	76.2	68.58	67.31	26.67	76.96	21.59

No.	P/N	No. Signal	No. Right Power	DIM "A"	DIM "B"	DIM "C"	DIM "E"	DIM "F"	DIM "H"
26	P2FRA-024-05XXXXXXXXAX	24	5	63.5	55.88	54.61	26.67	64.26	21.59
27	P2FRA-024-04XXXXXXXXAX	24	4	57.15	49.53	48.26	26.67	57.91	21.59
28	P2FRA-024-02XXXXXXXXAX	24	2	44.45	36.83	35.56	26.67	45.21	21.59
29	P2FRA-020-14XXXXXXXXAX	20	14	118.11	110.49	109.22	24.13	118.87	19.05
30	P2FRA-020-06XXXXXXXXAX	20	6	67.31	59.69	58.42	24.13	68.07	19.05
31	P2FRA-020-04XXXXXXXXAX	20	4	54.61	46.99	45.72	24.13	55.37	19.05
32	P2FRA-020-02XXXXXXXXAX	20	2	41.91	34.29	33.02	24.13	42.67	19.05
33	P2FRA-016-16XXXXXXXXAX	16	16	128.27	120.65	119.38	21.59	129.03	16.51
34	P2FRA-016-12XXXXXXXXAX	16	12	102.87	95.25	93.98	21.59	103.63	16.51
35	P2FRA-016-05XXXXXXXXAX	16	5	58.42	50.80	49.53	21.59	59.18	16.51
36	P2FRA-016-04XXXXXXXXAX	16	4	52.07	44.45	43.18	21.59	52.83	16.51
37	P2FRA-016-02XXXXXXXXAX	16	2	39.37	31.75	30.48	21.59	40.13	16.51
38	P2FRA-012-18XXXXXXXXAX	12	18	138.43	130.81	129.54	19.05	139.19	13.97
39	P2FRA-012-10XXXXXXXXAX	12	10	87.63	80.01	78.74	19.05	88.39	13.97
40	P2FRA-012-08XXXXXXXXAX	12	8	74.93	67.31	66.04	19.05	75.69	13.97
41	P2FRA-012-06XXXXXXXXAX	12	6	62.23	54.61	53.34	19.05	62.99	13.97
42	P2FRA-012-05XXXXXXXXAX	12	5	55.88	48.26	46.99	19.05	56.64	13.97
43	P2FRA-012-04XXXXXXXXAX	12	4	49.53	41.91	40.64	19.05	50.29	13.97
44	P2FRA-008-10XXXXXXXXAX	8	10	85.09	77.47	76.20	16.51	85.85	11.43
45	P2FRA-008-06XXXXXXXXAX	8	6	59.69	52.07	50.80	16.51	60.45	11.43
46	P2FRA-008-04XXXXXXXXAX	8	4	46.99	39.37	38.10	16.51	47.75	11.43
47	P2FRA-008-03XXXXXXXXAX	8	3	40.64	33.02	31.75	16.51	41.40	11.43
48	P2FRA-008-02XXXXXXXXAX	8	2	34.29	26.67	25.40	16.51	35.05	11.43
49	P2FRA-004-04XXXXXXXXAX	4	4	44.45	36.83	35.56	13.97	45.21	8.89

				OPERATION	DRAW	DATE	SCALE	FIT	PART NO.
				X.X ±0.40	XSR	2021/07/27	UNIT	mm	P2FRA-XXX-XXXXXXXXAX
A1	2021/07/27	Add W/T WCON Spec.&P/N;Correct Drawing	XSR	X.XX ±0.25	CHECK	DATE	SIZE	A4	TITLE:
A0	2018/10/10	NEW	---	X.XXX ±0.15			SHEET	2/2	PSP Spacing A 90° DIP FEMALE (TYPE-2: 2.54Signal+Right Power)
REV	DATE	MODIFICATION DESCRIPTION	CHANGE	Angle ± 3°	APPROVE	DATE	PROJ.		Customer NO.
				DIM TOL					

WCON
Http: www.wcon.com

WCON-Dongguan Tel: +86 769 85358920
WCON-Kunshan Tel: +86 512 57468408
Fax: +86 769 85358915
E-mail: sales@wcon.com

WCON-Kunshan Tel: +86 512 57468408
Fax: +86 512 57468468
E-mail: sales@wcon.com