

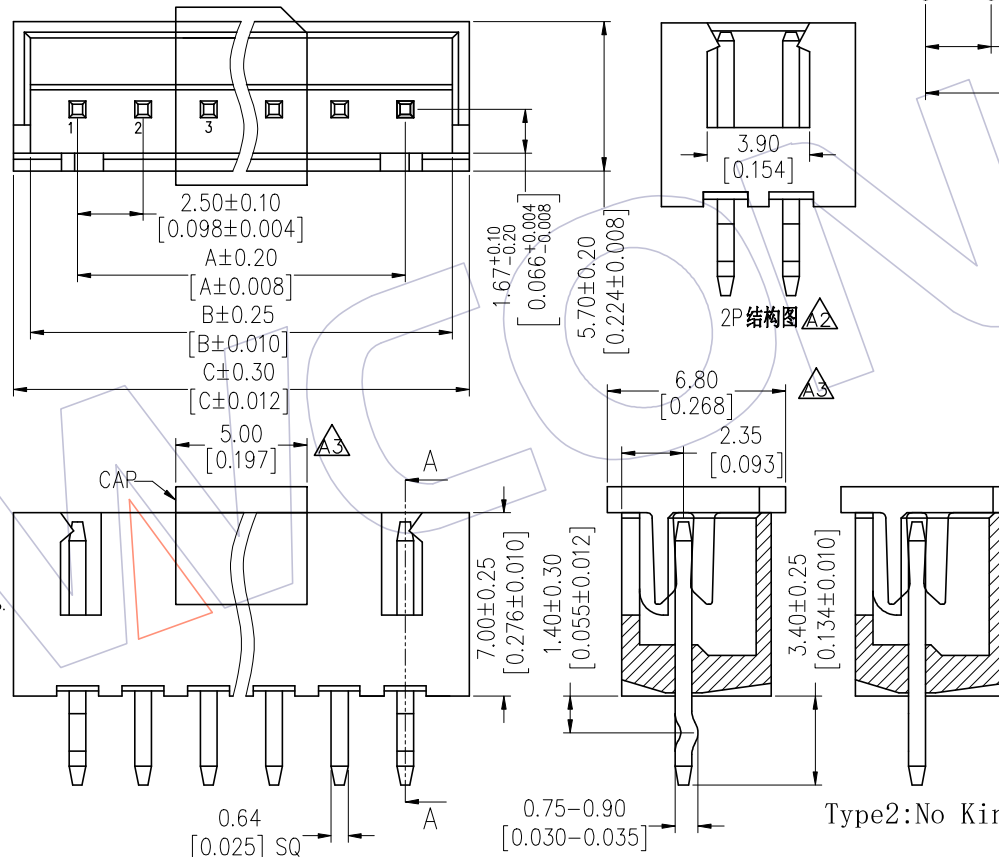
HSF

Recommended P.C.B Layout(Top Side)
(PCB BOARD TOLERANCE±0.05)

NOTES:

Rated Current: 3.0AMP
 Rated Voltage: 250V AC/DC
 Contact Resistance: 20mΩ max
 Withstand Voltage: 1000V AC
 Insulation Resistance: 1000MΩ min
 Operation Temperature: -25℃ to +85℃

Contact Material: Brass
 Contact plating: Au Or Sn Over Ni
 Insulator Material: PA66 Or PA46 UL94V-0



TITLE	PART NO.
TYPE 1	WF2501-WSXXX1
TYPE 2	WF2501-WSXXX2

Ordering Information

WF2501 - WS **XX** **X** **X** **X**

No. of pins: 02P~13P
 H=PA46
 Blank=PA66

Contact Plating:
 S0=Gold Flash/Tin
 S3=10u"Gold/Tin
 S4=15u"Gold/Tin
 S5=30u"Gold/Tin
 G0=Gold Flash
 G3=10u"Gold
 G4=15u"Gold
 G5=30u"Gold
 Blank=Tin

Color:
 B=Black
 T=Natural
 W=White
 E=Beige

Series No.:
 1=Type 1
 2=Type 2

Packing:
 0=PE Bag
 T=Tube
 R=Reel+CAP

Specification & Ordering Information:

Circuit	Part No.	Dimension		
		A	B	C
02	WF2501-WS02XXXX	2.50	6.1	7.4
03	WF2501-WS03XXXX	5.00	8.6	9.9
04	WF2501-WS04XXXX	7.50	11.1	12.4
05	WF2501-WS05XXXX	10.00	13.6	14.9
06	WF2501-WS06XXXX	12.50	16.1	17.4
07	WF2501-WS07XXXX	15.00	18.6	19.9
08	WF2501-WS08XXXX	17.50	21.1	22.4
09	WF2501-WS09XXXX	20.00	23.6	24.9
10	WF2501-WS10XXXX	22.50	26.1	27.4
11	WF2501-WS11XXXX	25.00	28.6	29.9
12	WF2501-WS12XXXX	27.50	31.1	32.4
13	WF2501-WS13XXXX	30.00	33.6	34.9

REV	DATE	MODIFICATION DESCRIPTION	CHANGE	OPERATION	DRAW	DATE	SCALE	FIT	PART NO.
A5	2023/04/15	Modified PIN: 2P-13P	—	OPERATION	NYF	2022/09/17	UNIT	mm	WF2501-WSXXXXXX
A4	2022/09/17	Modified withstand voltage	—	X.X ±0.40	CHECK	DATE	SIZE	A4	TITLE:
A3	2022/04/02	Add CAP	—	X.XX ±0.25	APPROVE	DATE	SHEET	1/1	"J"TYPE 2.50 WAFER 180° DIP
A0	2012/09/05	NEW	—	X.XXX ±0.15	DATE	DATE	PROJ.	Customer NO.	
				Angle ± 3°					
				DIM TOL					

WCON

Http: www.wcon.com

WCON-Dongguan WCON-Kunshan
 Tel: +86 769 85358920 Tel: +86 512 57468408
 Fax: +86 769 85358915 Fax: +86 512 57468468
 E-mail: sales@wcon.com E-mail: sales@wcon.com