

HSF

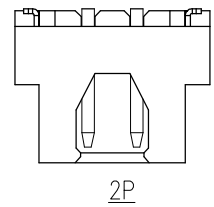
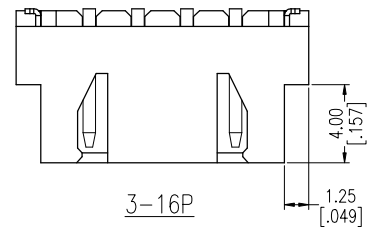
NOTES:
 Rated Current:3.0A
 Contact Resistance:20mΩ max
 Withstand Voltage:1000V AC/Minute
 Insulation Resistance:1000MΩ min
 Operation Temperature:-40℃ to +105℃

Insulator Material:LCP+30%G.F UL94V-0 NA
 CAP Material:LCP+30%G.F UL94V-0 NA
 Contact Material:Brass,Bright Tin Over Nickel
 Solder Tabs:Brass,Matte Tin Over Nickel

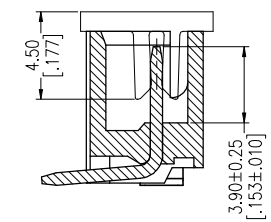
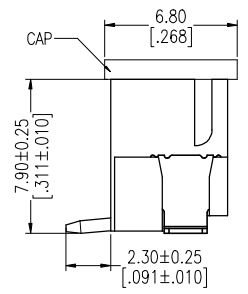
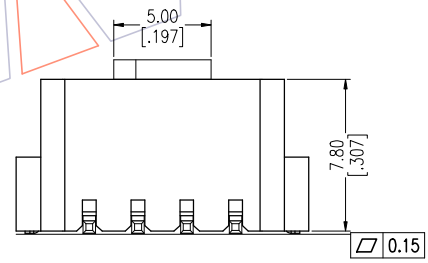
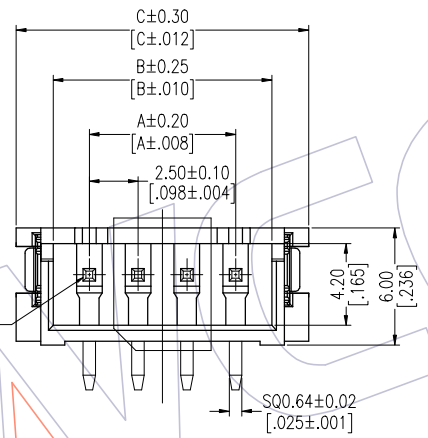
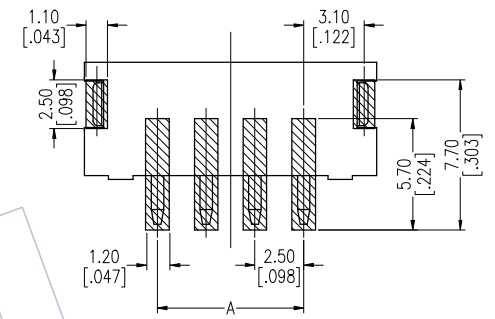
Ordering Information

WF2501 - WMH **XX** **T** **R** **1**

No.of pins
2-16P
Color
T=Natural
Packing
R=Tape&Reel+CAP



Recommended P.C.B Layout (Top Side)
 (PCB BOARD TOLERANCE±0.05)



Pins	DIM		
	A	B	C
02	2.50	6.20	10.00
03	5.00	8.70	12.50
04	7.50	11.20	15.00
05	10.00	13.70	17.50
06	12.50	16.20	20.00
07	15.00	18.70	22.50
08	17.50	21.20	25.00
09	20.00	23.70	27.50
10	22.50	26.20	30.00
11	25.00	28.70	32.50
12	27.50	31.20	35.00
13	30.00	33.70	37.50
14	32.50	36.20	40.00
15	35.00	38.70	42.50
16	37.50	41.20	45.00

REV	DATE	MODIFICATION DESCRIPTION	CHANGE	OPERATION		DRAW	DATE	SCALE	FIT	PART NO.
				DIM	TOL					
AO	2021.04.27	NEW	-----	X.X	±0.40	ZHLL	2021.04.27	UNIT	mm [inch]	WF2501-WMHXXTR1
				X.XX	±0.25	CHECK	DATE	SIZE	A4	TITLE:
				X.XXX	±0.15	APPROVE	DATE	SHEET	1/1	2.50mm Pitch Wafer 180°SMT
				Angle	± 3'			PROJ.	⊕	Customer NO.

WCON

Http: www.wcon.com
 WCON-Dongguan Tel: +86 769 85358920
 WCON-Kunshan Tel: +86 512 57468408
 Fax: +86 769 85358915 Fax: +86 512 57468468
 E-mail: sales@wcon.com E-mail: salesks@wcon.com