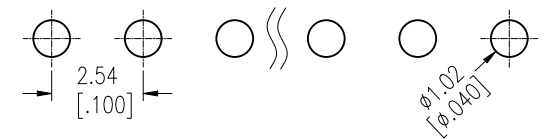
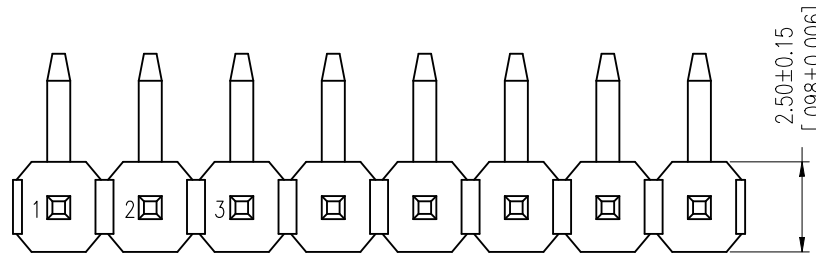


# HSF

Recommended P.C.B Layout (Top Side)  
(PCB BOARD TOLERANCE±0.05)

NOTES:  
Rated Current:3.0AMP.  
Contact Resistance:20mΩ Max.  
Withstand Voltage:1000V AC/DC  
Insulation Resistance:1000MΩ Min.  
Operation Temperature:-40°C to +105°C

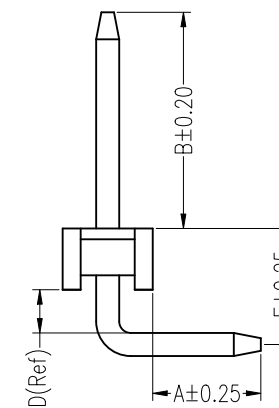
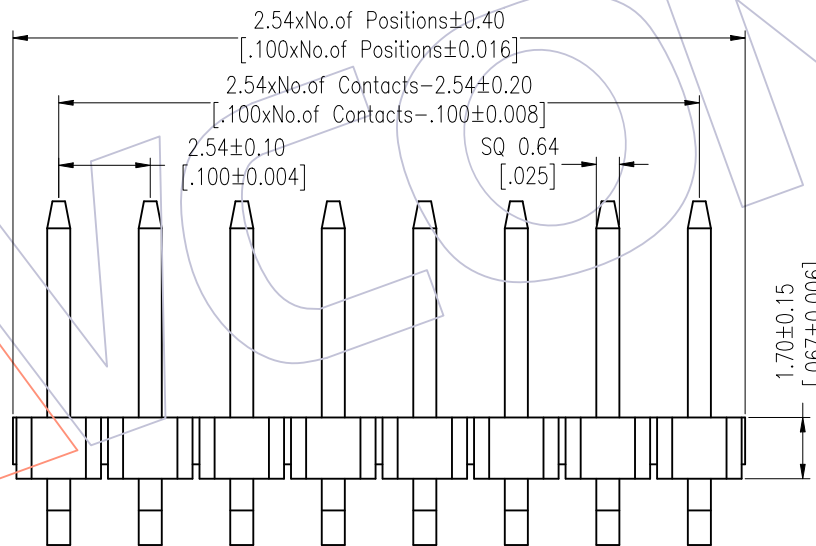
Contact Material:Brass  
Contact Plating:Au or Sn Over Ni  
Insulator Material:PA9T+33%G.F UL94V-0 BK



## Ordering Information

1117-11 XX XX R XXX C 0 XX  $\triangle$  Ai

|             |  |                                  |                    |                    |            |
|-------------|--|----------------------------------|--------------------|--------------------|------------|
| No. of Pins | Contact Plating  | Pin Length                       | Insulator Material | Packing            | Series No. |
| 02-40       | G0=Gold Flash<br>G3=10u"Gold<br>G4=15u"Gold<br>G5=30u"Gold<br>S0=Gold Flash/Tin<br>S3=10u"Gold/Tin<br>S4=15u"Gold/Tin<br>S5=30u"Gold/Tin<br>SN=Tin<br>SM=Matte Tin | L=A+B+D+2.9<br>Standard:131=13.1 | C=PA9T             | 0=PE Bag<br>T=Tube | 01-99      |



| Item      | Pin Length | A    | E    | B    | Mating    |
|-----------|------------|------|------|------|-----------|
| Standard  | 13.10      | 3.00 | 3.22 | 6.00 | 2171 2185 |
| Alternate |            |      |      |      |           |

| REV | DATE       | MODIFICATION DESCRIPTION | CHANGE         | OPERATION   | DRAW    | DATE       | SCALE     | Fit | PART NO.                                      |
|-----|------------|--------------------------|----------------|-------------|---------|------------|-----------|-----|---|
| A1  | 2018/01/22 | Modify P/N               | $\triangle$ Ai | x.X ±0.40   | Ruipeng | 2018/01/22 | UNIT mm   |     | 1117-11XXXXRXXXC0XX                           |
| A0  | 2012/05/04 | NEW                      | -----          | x.XX ±0.25  | CHECK   | DATE       | SIZE A4   |     | TITLE:  |
|     |            |                          |                | x.XXX ±0.15 | APPROVE | DATE       | SHEET 1/1 |     | PH2.54 SINGLE ROW<br>90°H=1.7 CONCAVE BENDING |
|     |            |                          |                | Angle ± 3'  |         |            | PROJ.     |     | Customer NO.                                  |
|     |            |                          |                | DIM TOL     |         |            |           |     |   |

**WCON**  
Http: www.wcon.com

WCON-Dongguan      WCON-Kunshan  
Tel: +86 769 85358920      Tel: +86 512 57468408  
Fax: +86 769 85358915      Fax: +86 512 57468468  
E-mail: sales@wcon.com      E-mail: salesks@wcon.com