

NOTES:

1. Electrical Performance:
- 1-1. Current Rating: 0.5 A at AC 100V.
- 1-2. Withstand Voltage: 250V AC.
- 1-3. Contact Resistance: See Table A3
- 1-4. Insulation Resistance: 1000MΩ Min.
- 1-5. Operation Temperature: -55°C to +85°C
2. Material:
- 2-1. Housing: LCP: Black/Natural; UL94V-0. ΔA
- 2-2. Contact: Phosphor Bronze, T=0.20mm.
- 2-3. Fitting Nail: Brass, T=0.25mm.
- 2-4. Metal Cap: Stainless Steel, T=0.20mm.
3. Finish:
- 3-1. Contact: Gold Plating On Contact Area;
Matte Tin Plating On Solder Tails, Over Ni.
- 3-2. Fitting Nail: Sn Plating Over Ni Under Plating

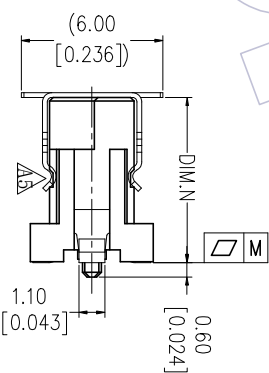
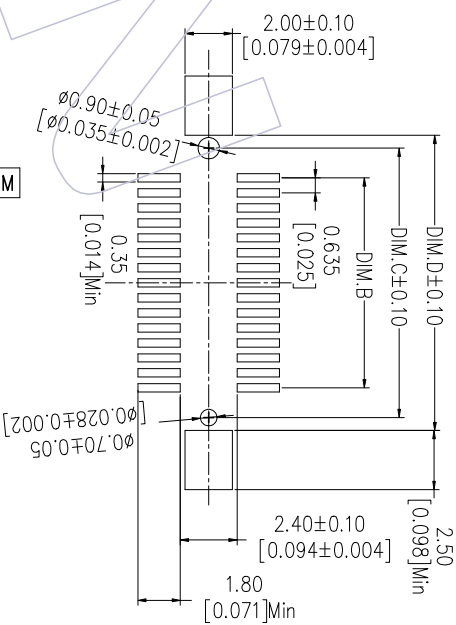
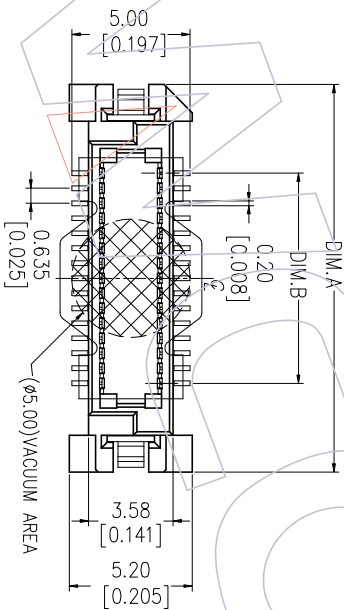
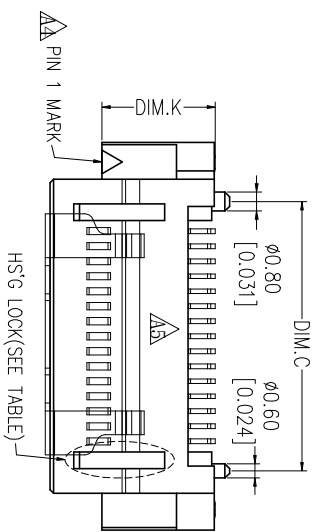
Flatness: <80Pins The "W" Is 0.12mm MAX
 ≥80Pins The "W" Is 0.15mm MAX

Ordering Information

3660-PXXX - XXX XX R 01

No. of Pins Housing High Contact Plating R=Tape&Reel+CAP

G1=3u"Gold
 G2=5u"Gold
 G3=10u"Gold
 S1=3u"Gold/Tin
 S2=5u"Gold/Tin
 S3=10u"Gold/Tin



ASS'Y HIGH(H)	Before Test		After Test	
	6.0~7.0	≤40mΩ	≤60mΩ	≤60mΩ
8.0~10.0	≤50mΩ	≤70mΩ	≤70mΩ	≤70mΩ
11.0~13.0	≤60mΩ	≤80mΩ	≤80mΩ	≤80mΩ
14.0~16.0	≤70mΩ	≤90mΩ	≤90mΩ	≤90mΩ

PART NO.	DIM.N	DIM.K
3660-PXXX-050XXXR01	5.00	2.80
3660-PXXX-060XXXR01	6.00	3.80
3660-PXXX-070XXXR01	7.00	4.80
3660-PXXX-080XXXR01	8.00	5.80
3660-PXXX-090XXXR01	9.00	6.80

ASS'Y HIGH(H)	PLUG(H1)	SOCKET(H2)
6.00	5.00	4.00
7.00	6.00	
8.00	7.00	
9.00	8.00	
10.00	9.00	
12.00	5.00	
13.00	6.00	10.00
14.00	7.00	
15.00	8.00	
16.00	9.00	

REV	DATE	MODIFICATION DESCRIPTION	CHANGE
A5	2017/07/21	Modify	ΔA
A4	2014/05/07	Modify	ΔA
A3	2014/03/07	Modify The Contact Resistance	ΔA
A0	2012/11/20	NEW	

OPERATION	DRAW	DATE	SCALE	FIT
XX ±0.40	Dwg	2017/07/21	mm	inch
XXX ±0.25	CHECK	DATE	mm	inch
XXXX ±0.15	APPROVE	DATE	mm	inch
Angle ± 3°			mm	inch
DIM TOL			mm	inch

PART NO.	TITLE:
3660-PXXX-XXXXXR01	0.635mm BTF "W" TYPE MALE 180° SMT ΔA
Customer NO.	

WCON
 Http: www.wcon.com

WCON-Dongguan WCON-Kunshan
 Tel: +86 769 85359920 Tel: +86 512 57468408
 Fax: +86 769 85359915 Fax: +86 512 57468468
 E-mail: sales@wcon.com E-mail: sales@wcon.com